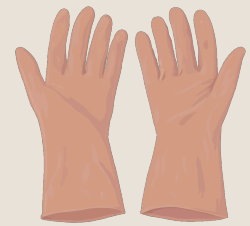


# CARE & MAINTENANCE

## NATURAL STONE

### ROUTINE CLEANING

For day-to-day maintenance of natural stone surfaces, including marble, limestone, travertine, and terrazzo, a pH-neutral cleaner is recommended. This is suitable for use across bathrooms, showers, and both residential and commercial floor areas. A gentle maintenance cleaner helps remove general dirt, light grime, and soap residue without affecting the integrity or finish of the stone.



### DIRECTIONS FOR USE



Dilute the cleaner in lukewarm water (approximately 20ml per 10 litres of water). Apply using a soft mop or cloth. For more absorbent or heavily used surfaces, a slightly stronger dilution may be required. After cleaning, allow the solution to dry naturally on the surface. Do not rinse with clean water, as this helps maintain the protective properties of the product.

### COVERAGE

As a concentrated formula, only a small amount is required for effective cleaning. For larger areas cleaned regularly, usage will vary depending on foot traffic and frequency of cleaning.



### ADDITIONAL ADVICE



In high-traffic areas or where there is a build-up of dirt over time, a more intensive cleaner may be required periodically.

## DEEP CLEANING (AS NEEDED)

For newly installed surfaces or areas exposed to heavier use, a stronger cleaning solution may be used for a more thorough clean. This should only be applied occasionally when required, not as part of regular maintenance.



## DIRECTIONS FOR USE



Dilute the cleaner with water (up to 1:10) and apply evenly across the surface. For more stubborn dirt or build-up, a stronger mixture (up to 1:5 or undiluted) can be used. Work the solution into the surface using a soft brush or pad and allow it to sit for 10–20 minutes. Do not allow the product to dry, add water if necessary to keep the surface damp. Agitate the area again before removing the solution. For larger areas, a squeegee or wet vacuum can be used. Rinse thoroughly with clean water to remove any residue. Repeat the process if required.

## COVERAGE

As a concentrated formula, only a small amount is required for effective cleaning. For larger areas cleaned regularly, usage will vary depending on foot traffic and frequency of cleaning.



## IMPORTANT



Avoid contact with sensitive materials such as metals, timber, painted finishes, or other delicate surfaces. Always test in an inconspicuous area prior to application.

# CARE & MAINTENANCE

## POLISHED SURFACES & SEALING



### RESTORING SHINE

Polished marble and granite can become dull over time. Use a neutral polishing solution to gently restore the surface's natural sheen, ideal for areas with light to moderate foot traffic.

### ROUTINE TOUCH-UPS

For regular maintenance, dilute a small amount of polishing solution in lukewarm water and wipe the surface with a soft mop or cloth. This keeps the stone looking bright and refreshed.

### DRYING & SAFETY

After application, allow the surface to dry completely—usually 30–40 minutes—before walking on it. This ensures the polish sets evenly and avoids streaking.

### SEALING NATURAL STONE

All natural stone, concrete tiles, and terrazzo are porous and benefit from sealing. An impregnating sealer penetrates the stone, forming a protective barrier without altering its appearance.

### ONGOING PROTECTION

While sealing reduces the risk of staining and makes cleaning easier, no sealer makes stone completely stain-proof. Reapply periodically in high-use areas and always test products in a discreet spot first.

# CARE & MAINTENANCE

## POLISHED SURFACES & SEALING

### TEST FIRST

01.

Before applying a sealer, always test on a small, inconspicuous area. This ensures compatibility with your stone and avoids unexpected reactions

### PREPARE THE SURFACE

02.

The stone must be completely dry and clean. Work in small sections to ensure even application and full absorption

### APPLICATION

03.

Apply evenly until the surface looks wet. Allow 5–15 minutes for absorption and wipe any excess, do not let it dry on the surface

### DRYING & CURING

04.

Surfaces are walkable after 30–40 minutes. Full effectiveness takes ~5 days, avoid covering and wipe up spills.

### COVERAGE & PRECAUTIONS

05.

Coverage varies by stone type. Non-absorbent surfaces cannot be sealed, and nearby materials should be protected from splashes

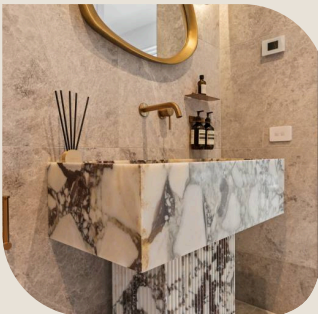
# CARE & MAINTENANCE

## POLISHED SURFACES & SEALING



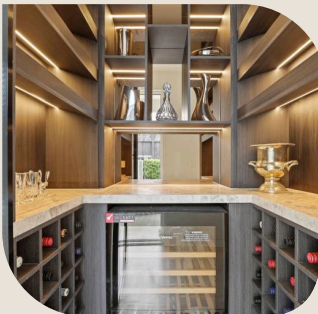
### 1. TEST BEFORE USE

Always Always begin by applying the product on a small, inconspicuous area. Allow 24 hours to check both the ease of application and the final effect. ensures the sealer behaves as expected, avoids surprises on the main surface.



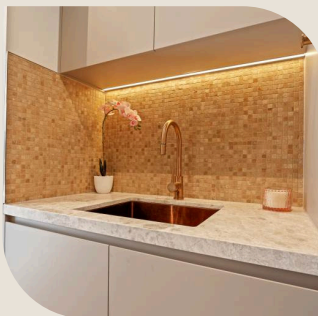
### 2. PREPARE THE SURFACE

Make sure the stone is completely dry, clean, and free from dust, residues, or previous sealers. Proper preparation is essential for the product to penetrate evenly and achieve optimal stain protection.



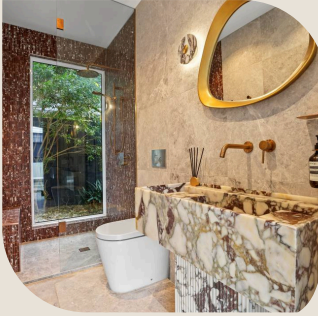
### 3. USE UNDILUTED

Apply the product without thinning. Using it undiluted ensures the sealer penetrates the pores of the stone effectively and delivers maximum protection.



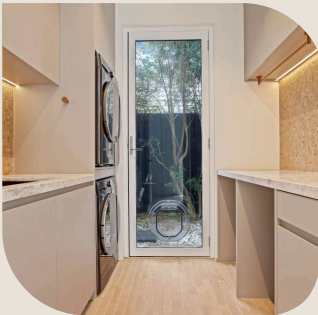
### 4. GENEROUS APPLICATION

Saturate the surface using a low-pressure hand spray, clean brush, or similar tool. The stone should appear wet with a mirror-like finish for 3–5 seconds. Take care to avoid splashes on surrounding areas such as timber, metal, or ceramics.



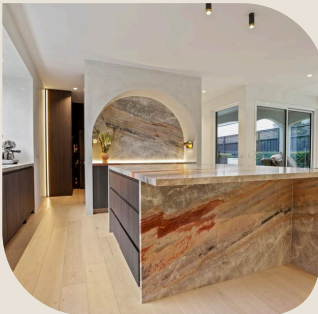
#### 5. REPEAT IF NEEDED

Once the surface becomes touch dry, or after a minimum of 10 minutes, repeat the application. Total coverage will typically be around 1 litre per 2–25 m<sup>2</sup>, depending on the stone's absorbency. This ensures thorough penetration for optimal stain resistance.



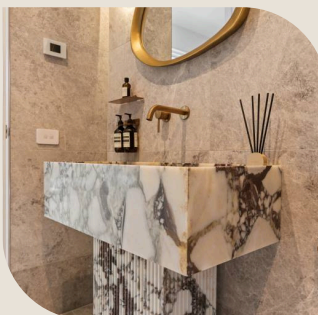
#### 6. POLISH THE SURFACE

After the final coat, wait approximately 10 minutes. Before the stone dries completely, polish using clean, dry cloths or towels. Slightly moisten the cloth with STAIN-PROOF™ to help remove excess product and achieve a smooth, even finish.



#### 7. CLEAN EQUIPMENT

Brushes, cloths, or spray equipment should be cleaned immediately after use with an organic solvent, such as methylated spirits. This prevents residue build-up and ensures tools remain in good condition.



#### 8. IMPORTANT NOTES

While the sealer improves stain resistance, it does not protect against etching, scuff marks, or general wear. Some stones may lighten or darken slightly after treatment. Once fully cured, treated surfaces are safe for food contact and will be easier to maintain over time.